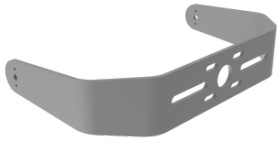
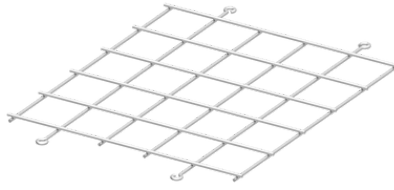


ACCESSORIES



TB1

Trunnion Bracket
3/4" NPT



WGS1

Stainless Steel
wire guard



SC1

Stainless Steel
safety cable (4mm)



PBC60

Pipe Clamp (M8*60mm)
for pole Ø 2-3/8"



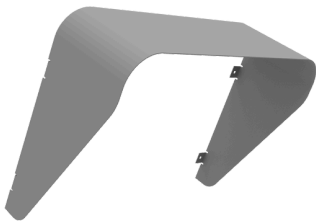
PBC48

Pipe Clamp (M8*48mm)
for pole Ø 1-7/8"



CAB

3' SEOOW-18/3 Cord
(Factory Installed)
Applicable to C1D2



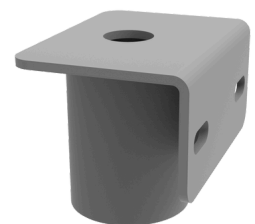
VS1

Stainless Steel
dark sky visor



CGL

Cable Gland
3/4" NPT
Suitable for C1D2



PS

Pole Stanchion
2-3/8" (60mm)

Note : SP10 is already included.